

Sunday Morning Worship  
June 25, 2017  
New Orleans

# GATHERING MUSIC

*Down By the Riverside*  
*Wade In the Water*  
*Glory, Glory, Hallelujah!*

# Down By the Riverside

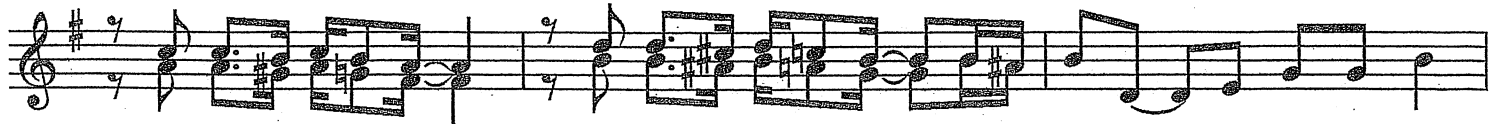
African-American Spiritual

$\text{♩} = 84$



Gon - na lay down my sword and shield, down by the ri - ver - side,  
Gon - na lay down my bur - den,

4



down by the ri-ver-side down by the ri-ver-side. Gon-na lay down my sword and shield,  
Gon-na lay down my bur - den,

7



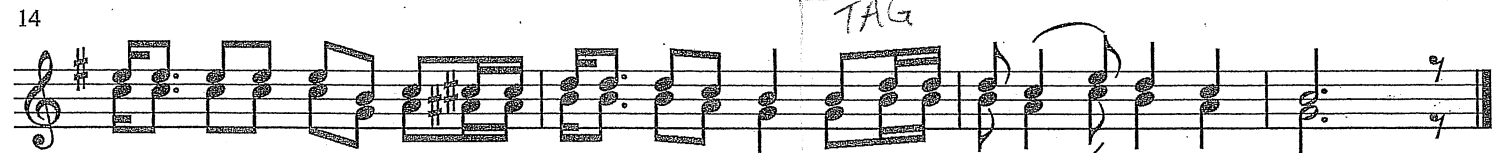
down by the ri-ver-side, gon-na stu-dy war no more. I ain't gon-na

10



stu-dy war no more, I ain't gon-na stu-dy war no more, ain't gon-na stu-dy war no more. I ain't gon-na

14



stu-dy war no more, I ain't gon-na stu-dy war no more, ain't gon-na stu-dy war no more.

VERSE 1  
VERSE 2  
INSTRUMENTAL  
VERSE 1

# Wade In the Water

Intro / A / B / A / B / A / Solo / B / A / A

African-American Spiritual  
Songs of the Underground Railroad  
early-to-mid 19th century  
arr. Mark Vogel

$\text{♩} = 120$

A  $\text{♩}$

Soprano

Musical notation for Soprano, Alto, and Baritone parts. The key signature is one sharp (F#) and the time signature is 4/4. The tempo is marked as quarter note = 120. The first two measures are marked with a circled '8' and a box containing 'A' and a repeat sign. The third measure is marked with a box containing 'A' and a repeat sign, and the dynamic is *mf*. The lyrics are: "Wade in the wa-ter, wade in the wa-ter, chil-dren, wade".

Alto

Baritone

Wade in the wa-ter, wade in the wa-ter, chil-dren, wade

21

Fine

Musical notation for Soprano (S), Alto (A), and Baritone (B) parts. The key signature is one sharp (F#) and the time signature is 4/4. The lyrics are: "in the wa - ter, God's gon-na trou-ble the wa - ter." The system ends with a double bar line and repeat dots.

S  
1. See that band all dressed in white.  
2. See that band all dressed in red.  
3. See that band all dressed in blue.

A  
1. See that band all dressed in white.  
2. See that band all dressed in red.  
3. See that band all dressed in blue.

B  
1. See that band all dressed in white.  
2. See that band all dressed in red.  
3. See that band all dressed in blue.

God's gon-na trou-ble the wa - ter.

S  
lead - er looks like an Is - rael - ite.  
looks like the band that Mo - ses led.  
must be the chil - dren a - co - min' through.

A  
The lead - er looks like an Is - rael - ite.  
It looks like the band that Mo - ses led.  
It looks like the chil - dren a - co - min' through.

B  
The lead - er looks like an Is - rael - ite.  
It looks like the band that Mo - ses led.  
It looks like the chil - dren a - co - min' through.

D.S.

S

A

B  
God's gon - na trou - ble the wa - ter.

# Glory, Glory, Hallelujah!

(When the Saints Go Marching In)

arr. Mark Vogel

$\text{♩} = 48$

SOLOIST

Voice

*mp* Glo-ry, glo-ry, hal-le - lu - jah! Since I laid my bur-den down.

9

accel.-----

Glo-ry, glo - ry, hal-le - lu - jah! Since I laid my bur-den down.

17

[A]  $\text{♩} = 80$  CHOIR / CONGREGATION

*mf* Glo-ry, glo-ry, hal-le - lu-jah! Since I laid my bur-den down. Glo-ry,

26

glo - ry, hal-le - lu - jah! Since I laid my bur-den down. *f* Feel like

34

[B]

shout - ing, "Hal-le - lu-jah!" Since I laid my bur-den down. Feel like shout - ing,

43

[C]

"Hal-le - lu - jah! Since I laid my bur-den down. Life is sweet-er,

51

so much sweet-er, since I laid my bur-den down. Life is sweet-er,

59

D



so much sweet-er, since I laid my bur-den down. Oh, when the Saints

67



go march-ing in, Oh, when the Saints go march-ing in, O Lord I want to

75

E 15



be in that num-ber when the Saints go march-ing in. Glo-ry,

98

F



glo-ry, hal-le - lu - jah! Since I laid my bur-den down. Glo-ry, glo-ry,

107

G



hal-le - lu - jah! Since I laid my bur-den down. Love is shin-ing

115



all a - round me, since I laid my bur-den down. Love is shin-ing

123



all a - round me, since I laid my bur-den down. Since I

130

rit. -----



laid my bur-den down. Since I laid my bur-den down.